

Shelly Usb Charger For Wall Display Stand



Short description

A Type A and C USB charger for Shelly Wall Display Stand.

Main applications:

- Residential
- MDU (Multi Dwelling Units - apartments, condominiums, hotels, etc.)
- Light commercial (small office buildings, small retail/restaurant/gas station, etc.)
- Government/municipal
- University/college

Compatibility

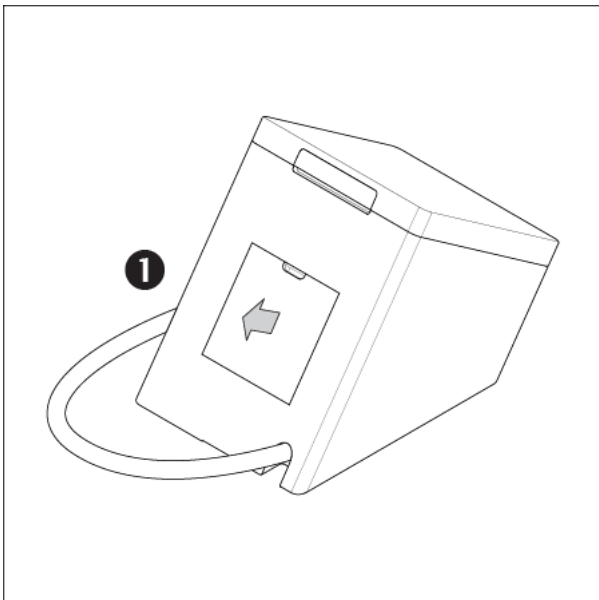
- Shelly Wall Display Stand

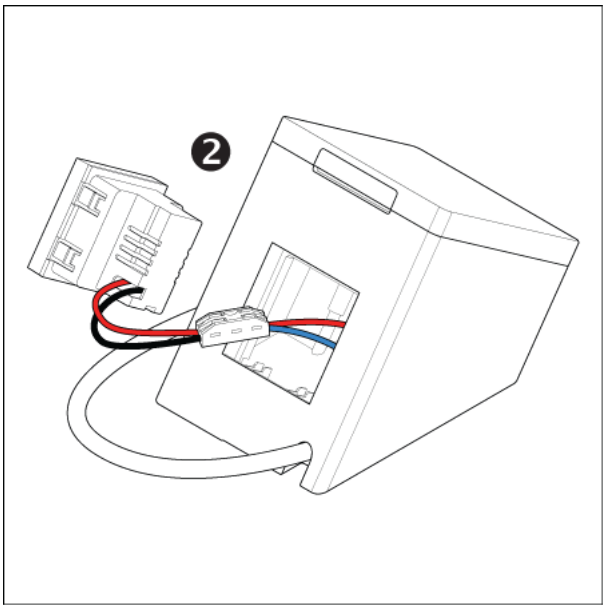
Specifications

Shelly		🔍 👤 🛒
Physical		
Size (HxWxD):	45x45x40 mm / 17.72x17.723x15.75 in	
Weight:	50 g / 1.76 oz	
Shell material:	Plastic	

Shell color:	<ul style="list-style-type: none"> • White • Black
Environmental	
Ambient working temperature:	-20°C to 40°C / -5°F to 105°F
Humidity:	30% to 70% RH
Electrical	
Power supply:	100 - 240 V~ 50/60 Hz
Max. input current:	500 mA
Output	
USB-A:	<ul style="list-style-type: none"> • 5 V, max. 3 A • 9 V, max. 2 A • 12 V, max. 1.5 A

Wiring diagram





3-03.png

Compliance

[Shelly USB Charger for Shelly Wall Display Stand multilingual EU declaration of conformity.pdf](#)

Printed user guide

[Shelly USB Charger for Wall Display Stand multilingual printed user and safety guide.pdf](#)

Sign up for our newsletter

Enter your email address

By checking this box, I consent to receive newsletters and marketing information via e-mail in accordance with the [Privacy Policy](#). I am aware that I can unsubscribe at any time.

[X](#) [Instagram](#) [Facebook](#) [YouTube](#)

Company

Help

Learn

Information