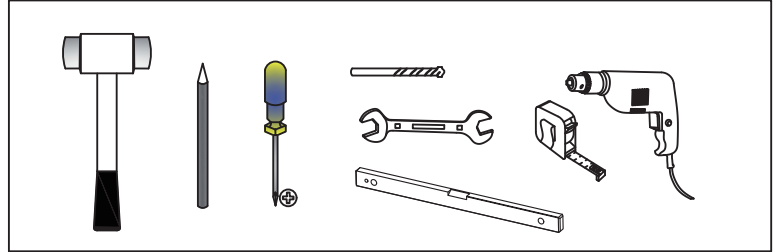


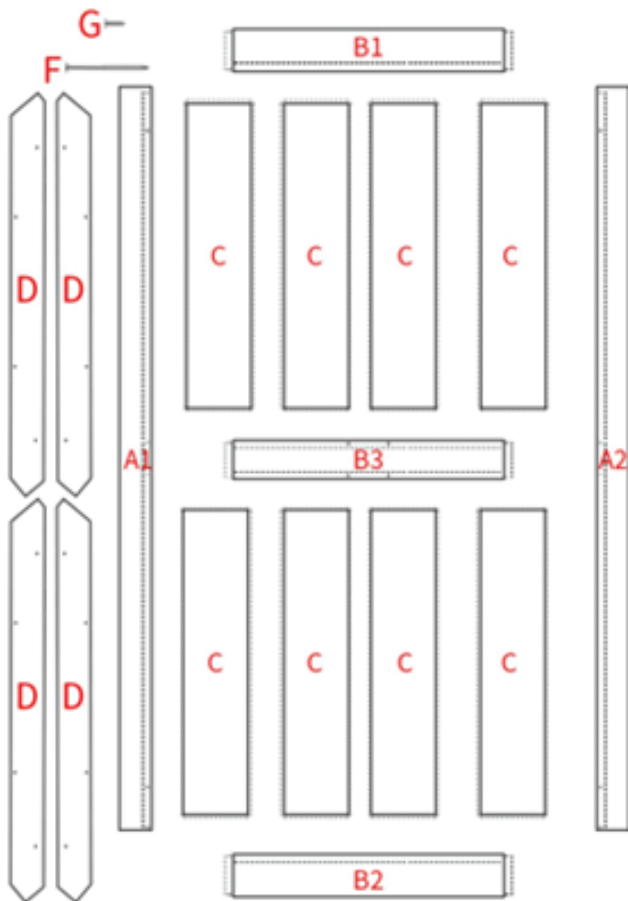
BARN DOOR

Barn Door Assembly Instructions

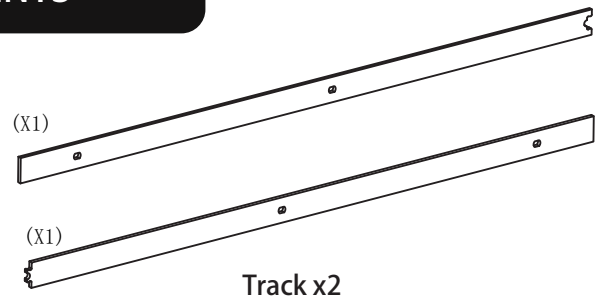
TOOLS REQUIRED (Not included)



PACKAGE CONTENTS



Boards



Large bolts x5



Wall anchors x5



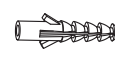
Washers x5



Anti-jump discs x2



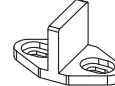
Screws x2



x2



Wall spacer x5



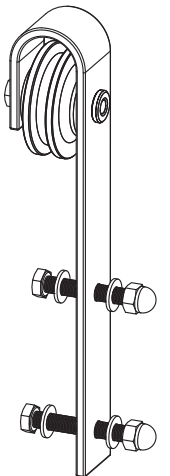
Floor guide x1



Stoppers x2



Allen wrench x1

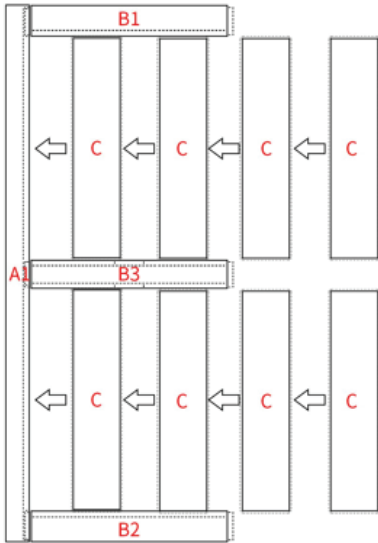


Hangers x2

BARN DOOR

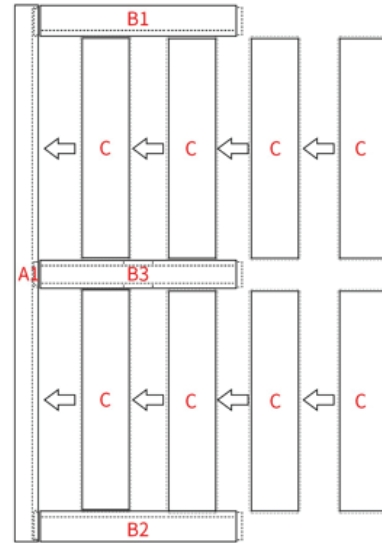
SLIDING DOOR INSTALLATION

1



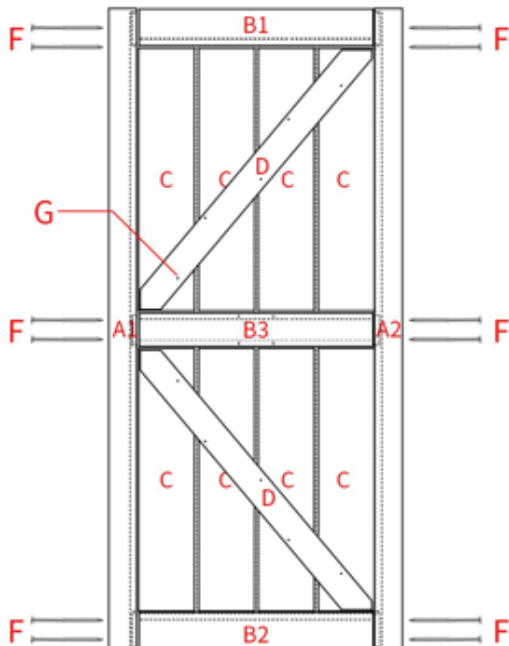
Insert the B1, B2, and B3 boards into the grooves of the A1 board as shown. Insert and slide in to the left the C boards into the B1, B2, and B3 boards as shown.

2



Insert board A2 as shown.

3

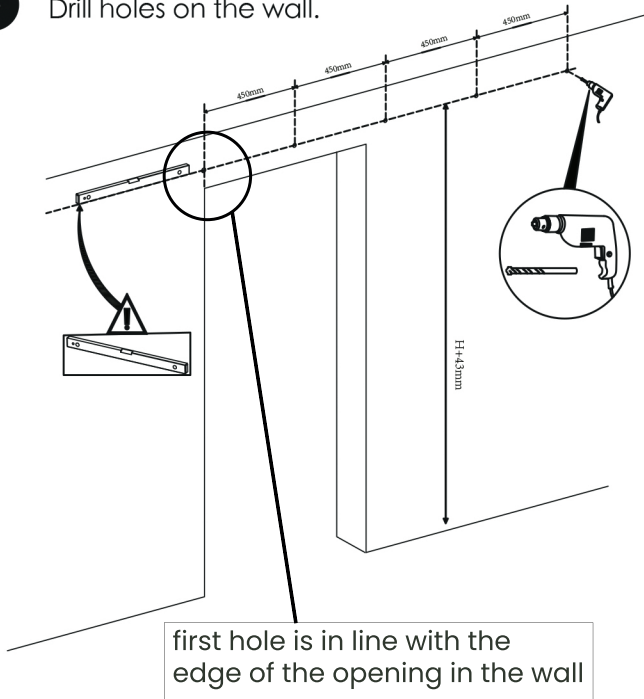


Secure the boards with screws (F) as shown. Place the D boards as shown and secure them with screws (G).

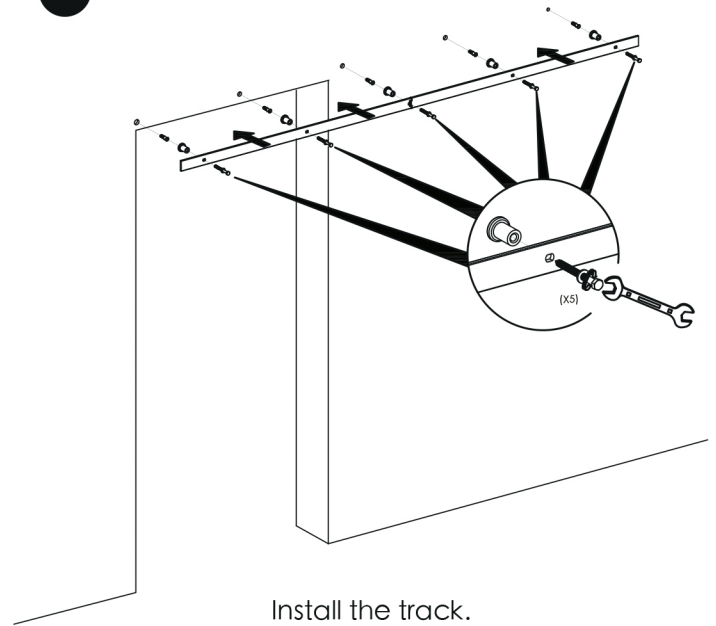
BARN DOOR

SLIDING DOOR INSTALLATION

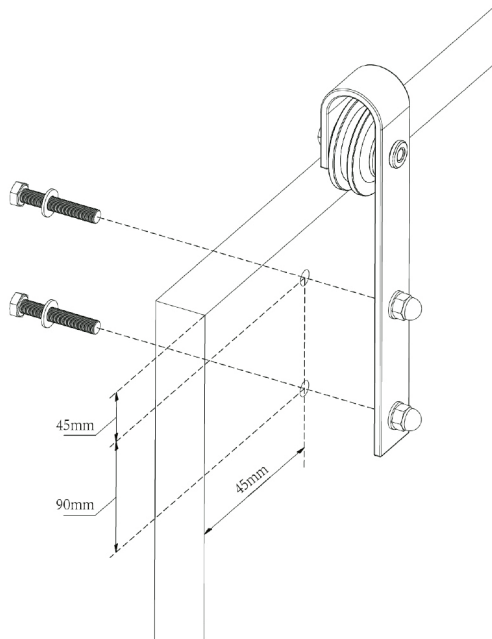
4 Drill holes on the wall.



5

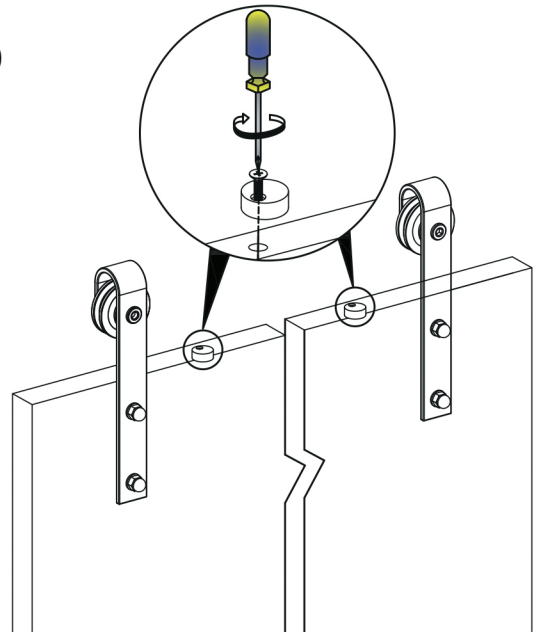


6



Secure the hangers to the track with the hanger screws and washers.

7



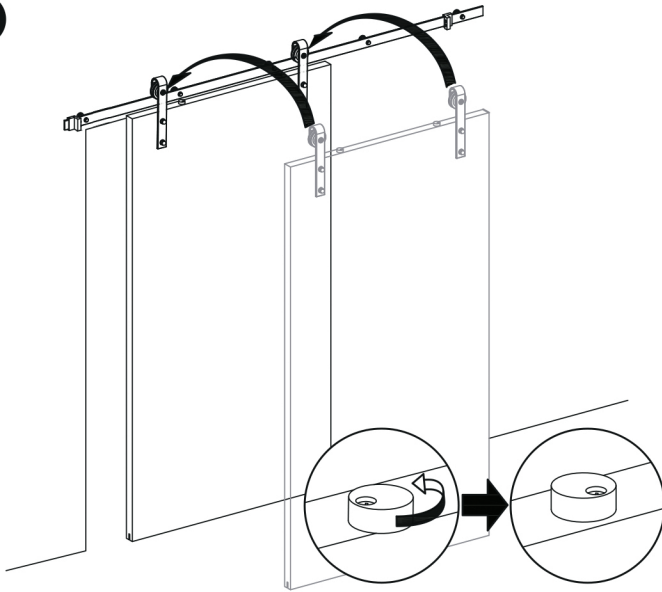
Install and slightly tighten the anti-jump discs at least 3cm from the edge of the hangers.

BARN DOOR

SLIDING DOOR INSTALLATION

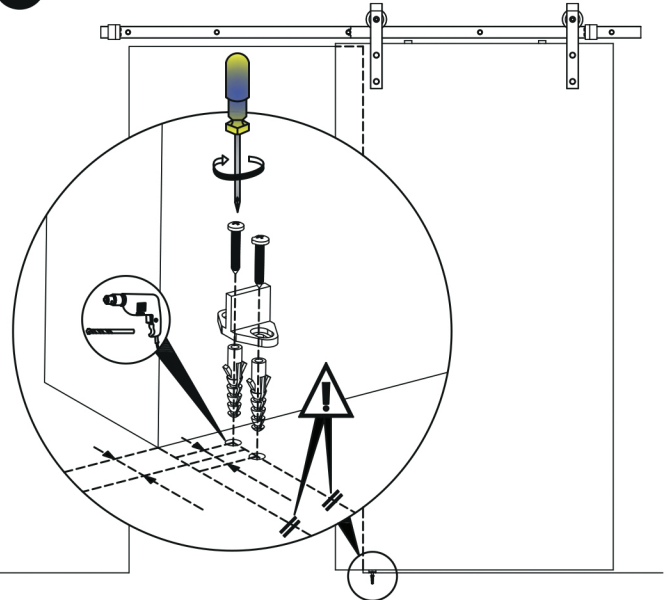
Step5.Install door&fix Anti-jumper

8



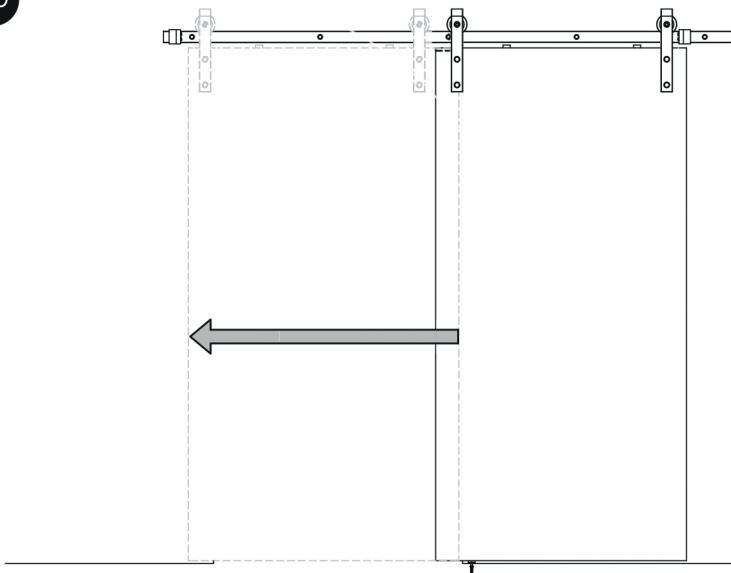
Place the assembled door on the track and tighten the anti-jump discs.

9



Drill holes on the floor and secure the floor guide with screws.

10



Drill holes on the floor and secure the floor guide with screws.

