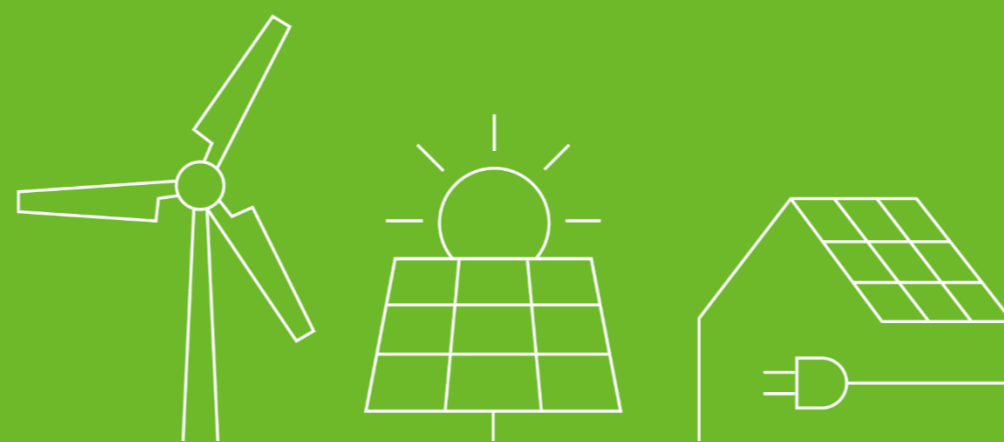




## ARK 2.5H Modular Battery



SHENZHEN GROWATT NEW ENERGY CO.,LTD

**G**ROWATT



**Dedicated to Becoming**

The World's Largest Supplier of Smart Energy Solutions

---



# CONTENTS

---

- 01 Product Overview
- 02 Leading Features
- 03 Extreme Safe and Reliable
- 04 Advanced Technology
- 05 System Flexibility
- 06 Smart Management
- 07 Parameter

# Product Overview



ARK High Voltage Battery System

2.56kWh / Module

Capacity: 7.68kWh ~ 25.6kWh

# Leading Features

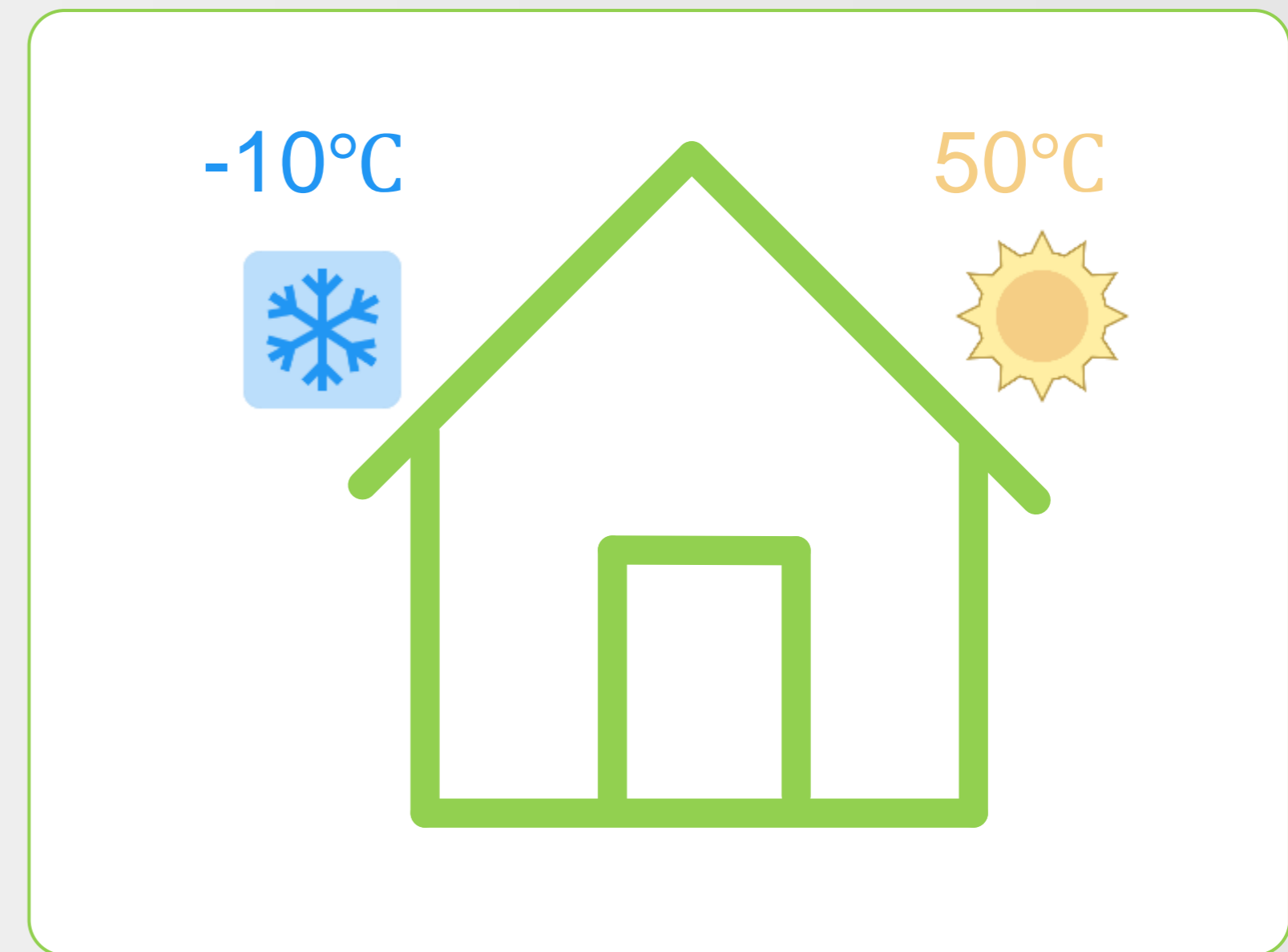
## IP65

Waterproof and dustproof, better lifetime guarantee, Indoor and outdoor installation



## Wide Working Temperature Range

Operation temperature: -10°C ~ 50°C



\* Battery discharge: -10°C ~ 50°C, battery charge: 0°C ~ 50°C

# Leading Features

## Natural Cooling

ARK 2.5H is designed with natural cooling providing optimum efficiency

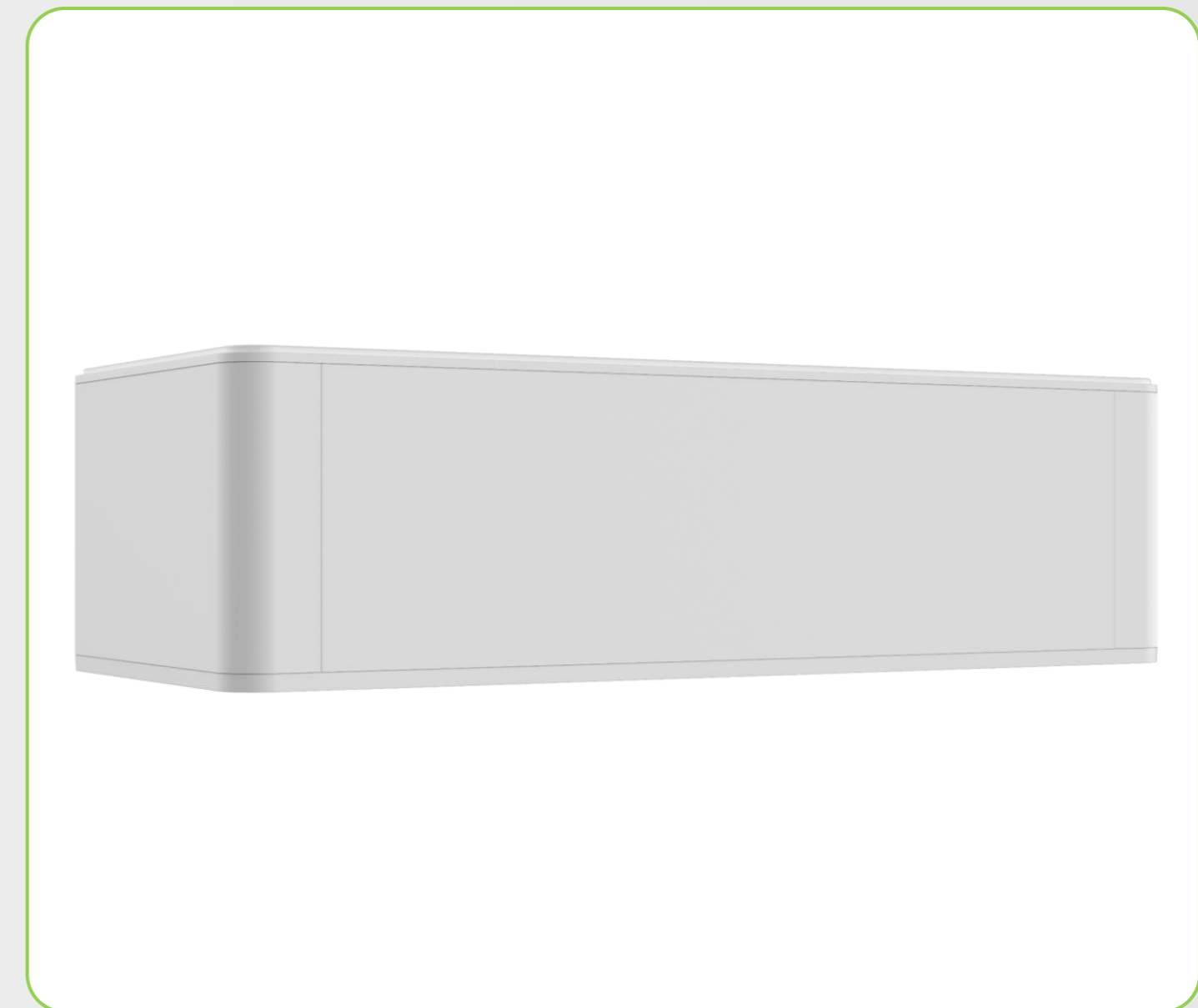


## Compact Design

Weight: 28kg

Dimension: 650\*260\*185 mm

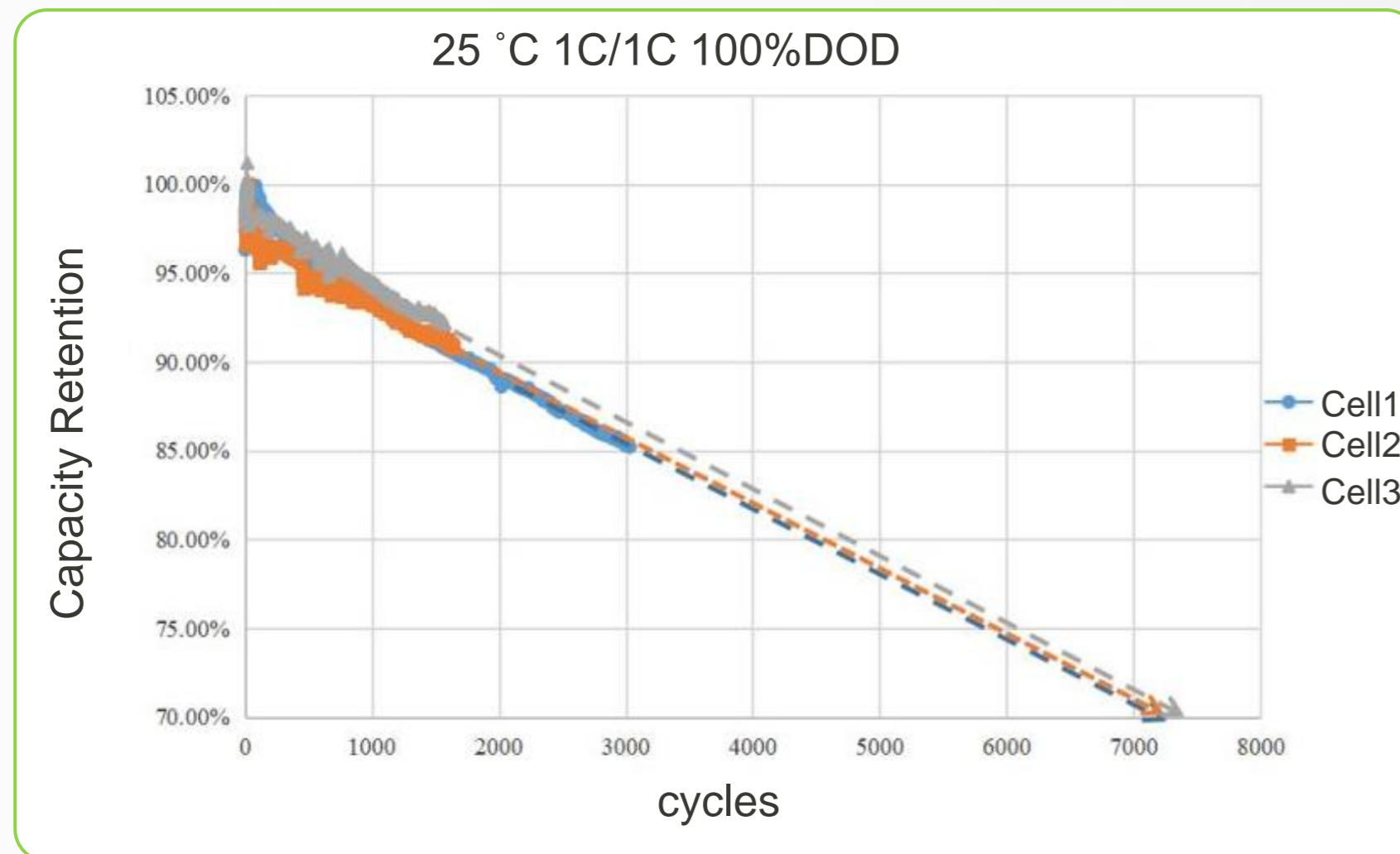
Modular Design



# Leading Features

## Battery Cell Life > 7000

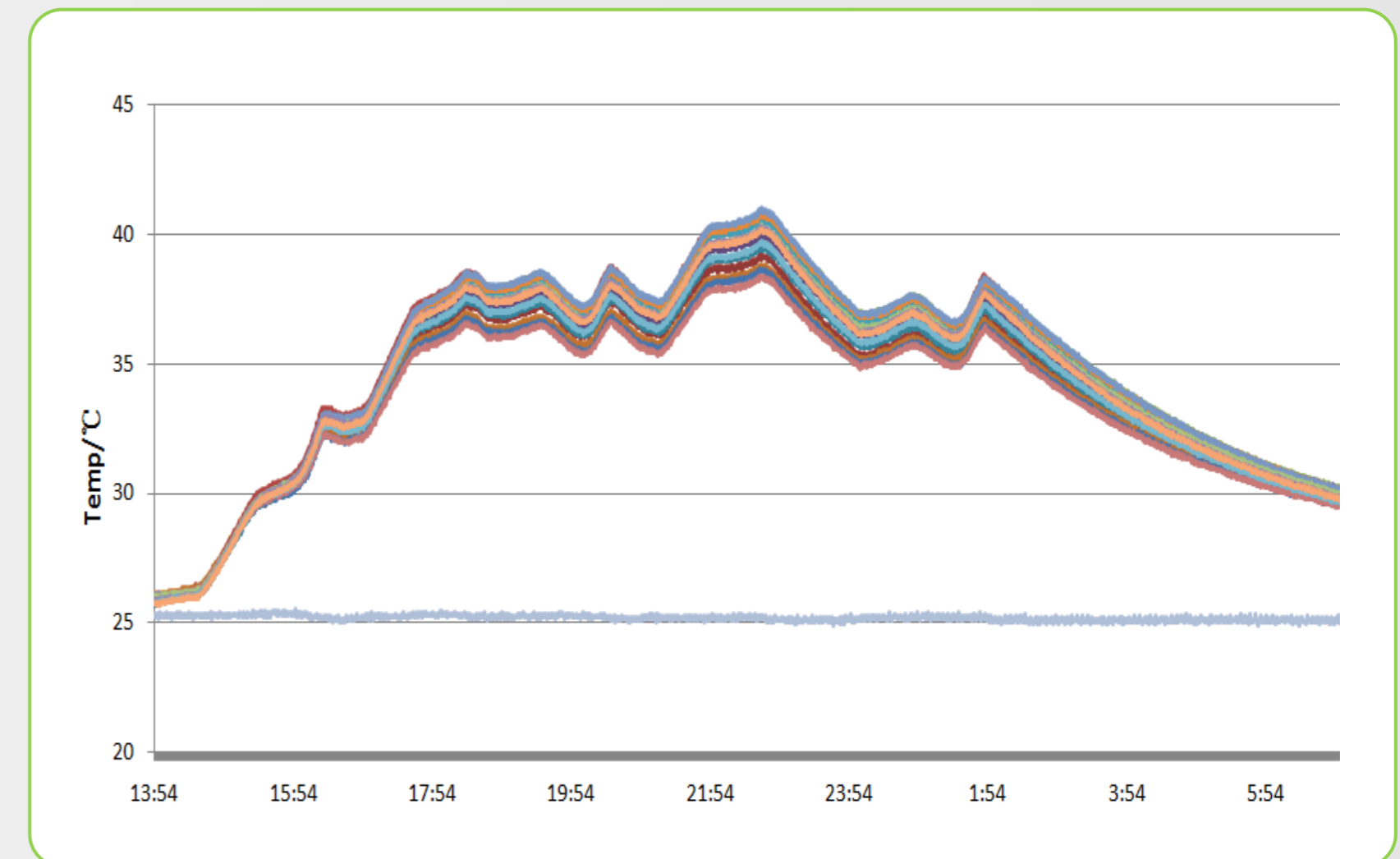
Residual capacity remains at 70% original capacity after 7000 cycles.



\* Under specific testing environment

## Thermal Balance

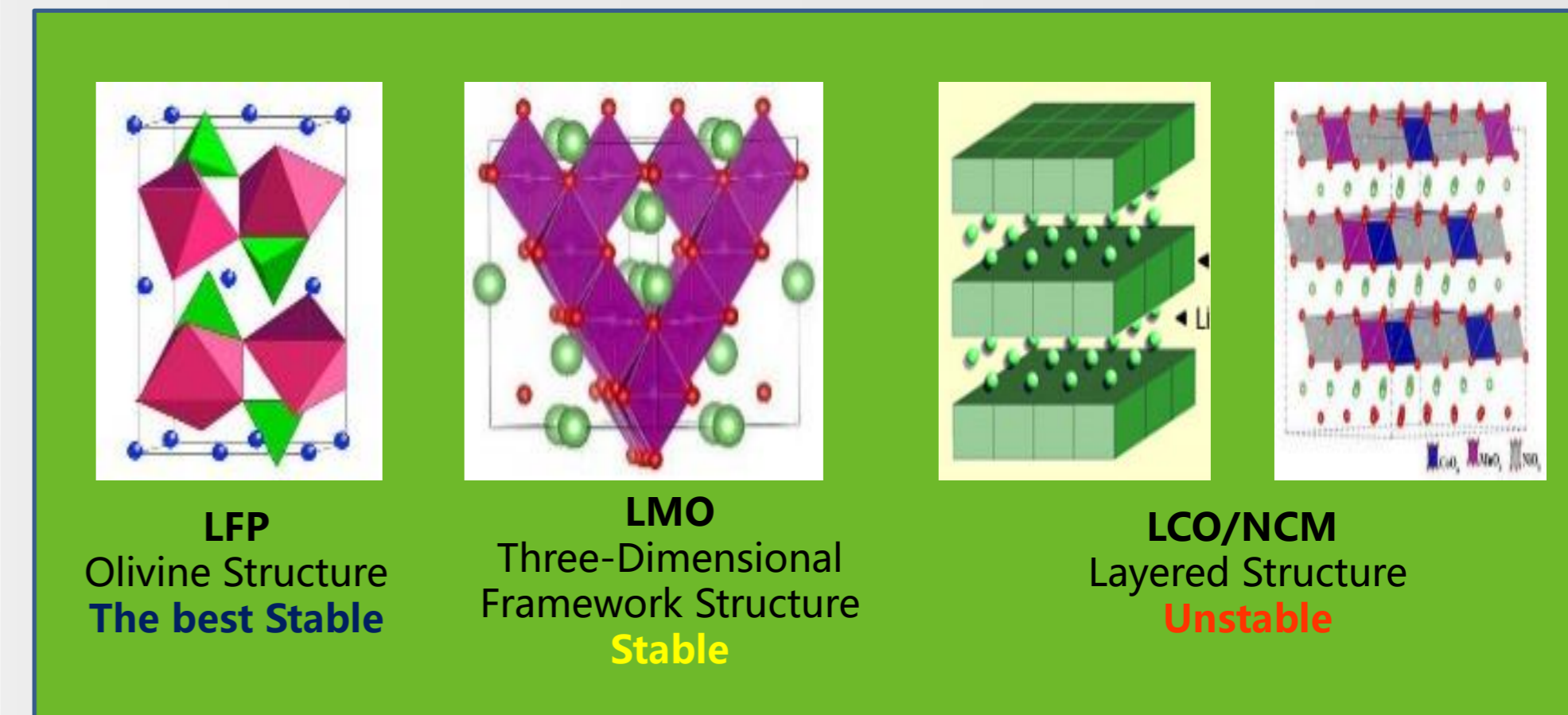
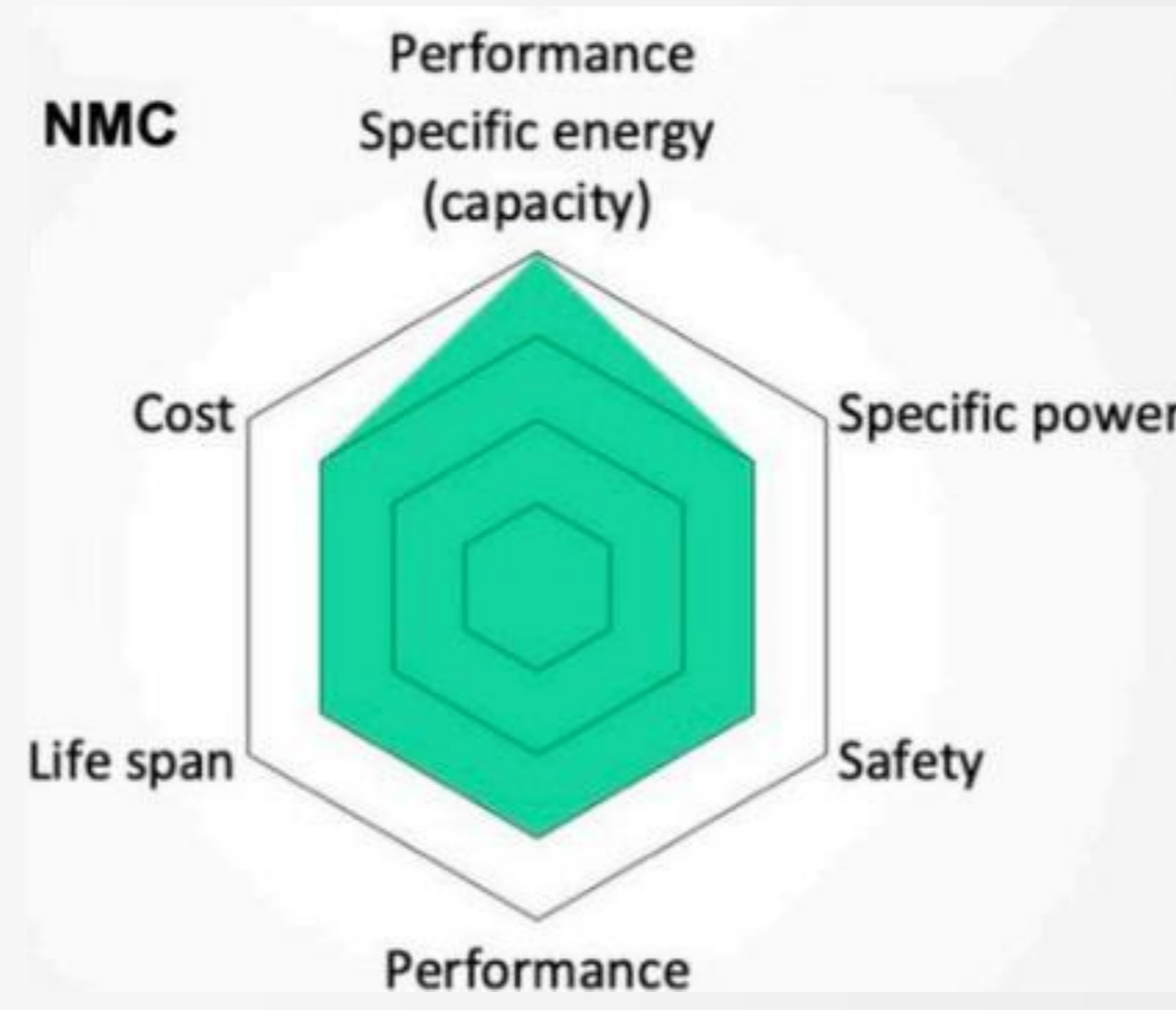
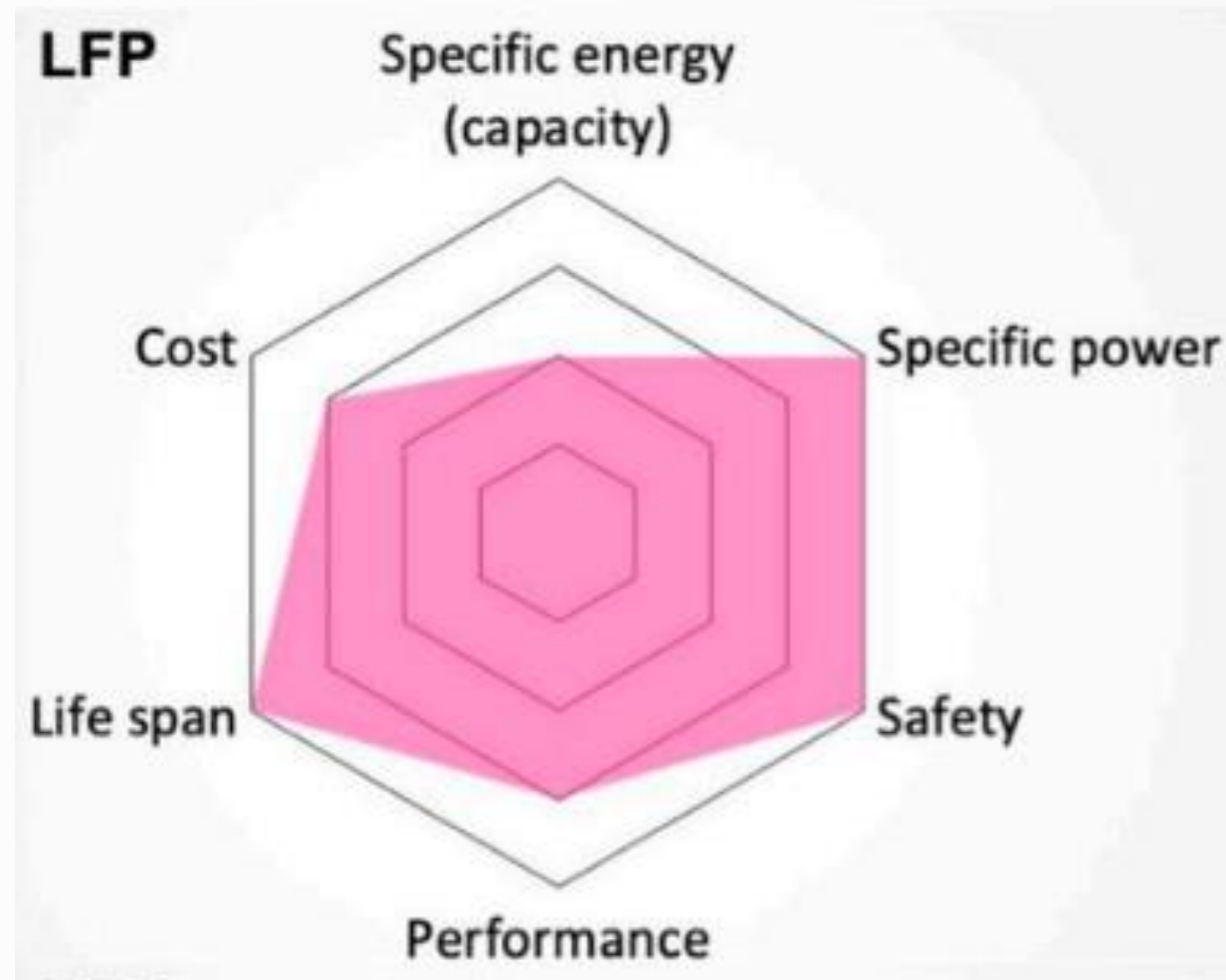
5°C cell temperature range



# Extreme Safe and Reliable

LFP is the most suitable chemistry for residential ESS

Better



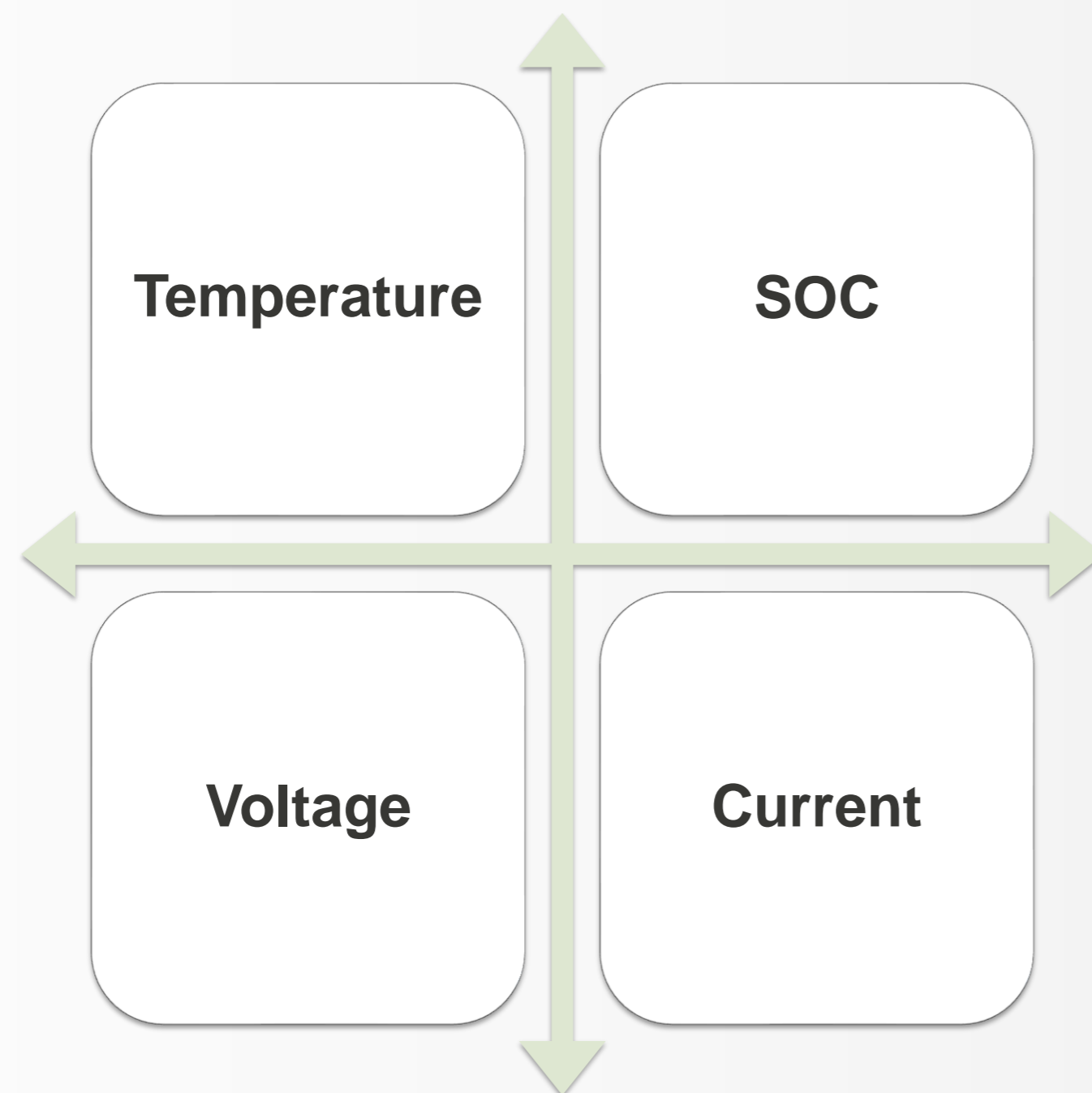
LiFePO<sub>4</sub> chemistry features stable structures and its thermal runaway temperature is over 480°C. That's 100% higher than NCM chemistry



# Extreme Safe and Reliable

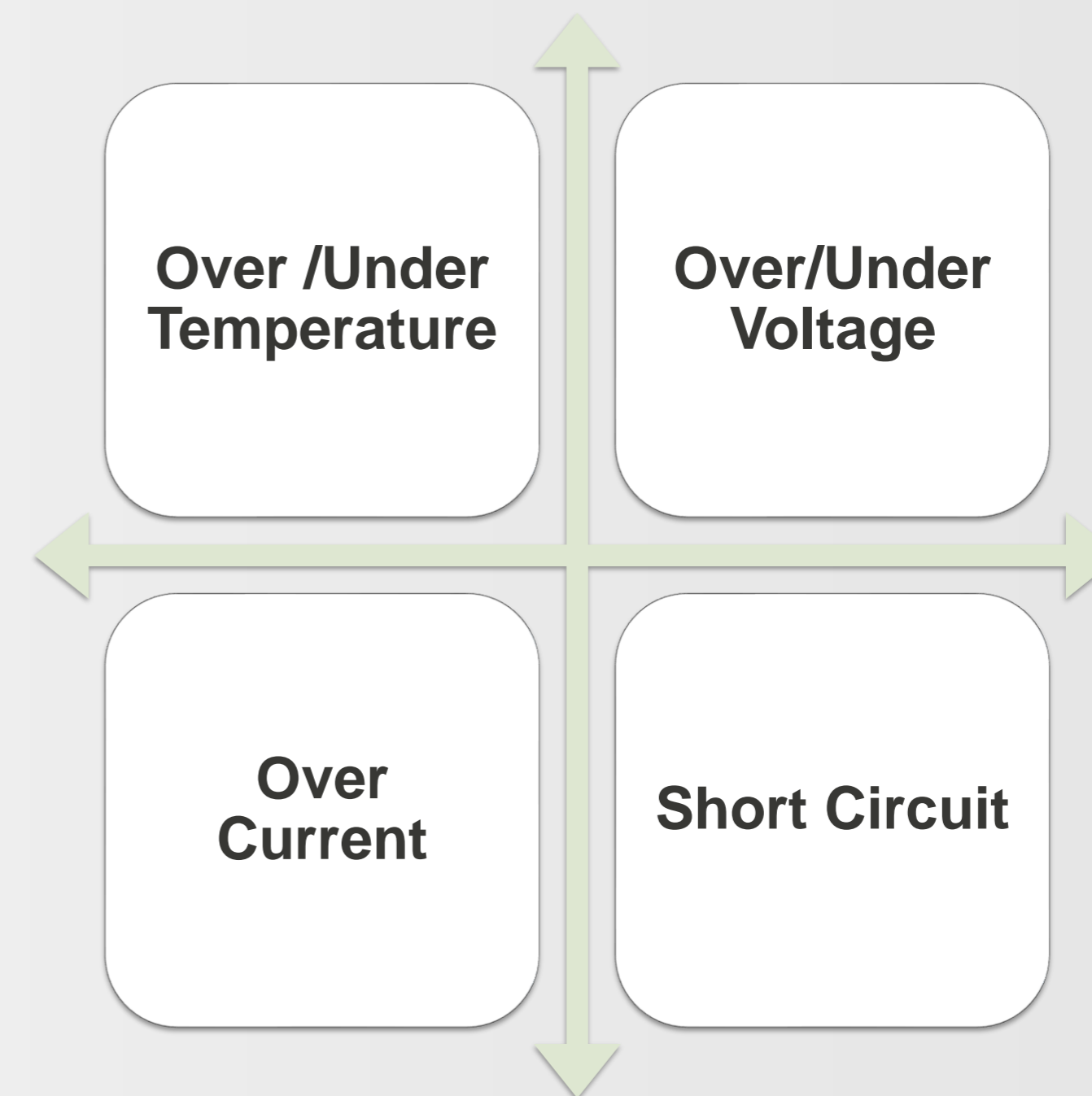
## Cell Monitoring

Not only monitor battery module data, but also monitor each cell security status

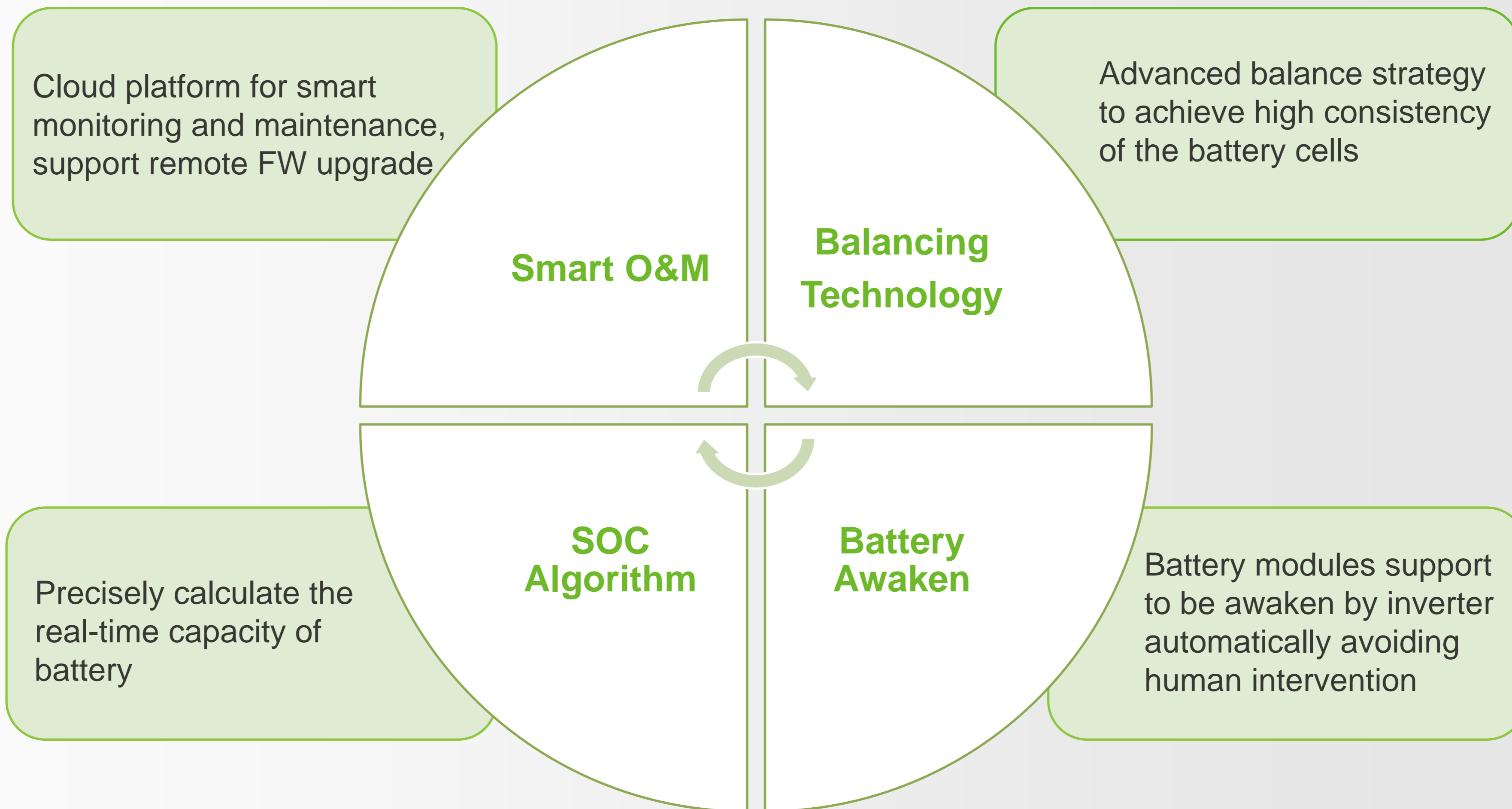


## Full Protection

Provide full-protection for the whole battery system

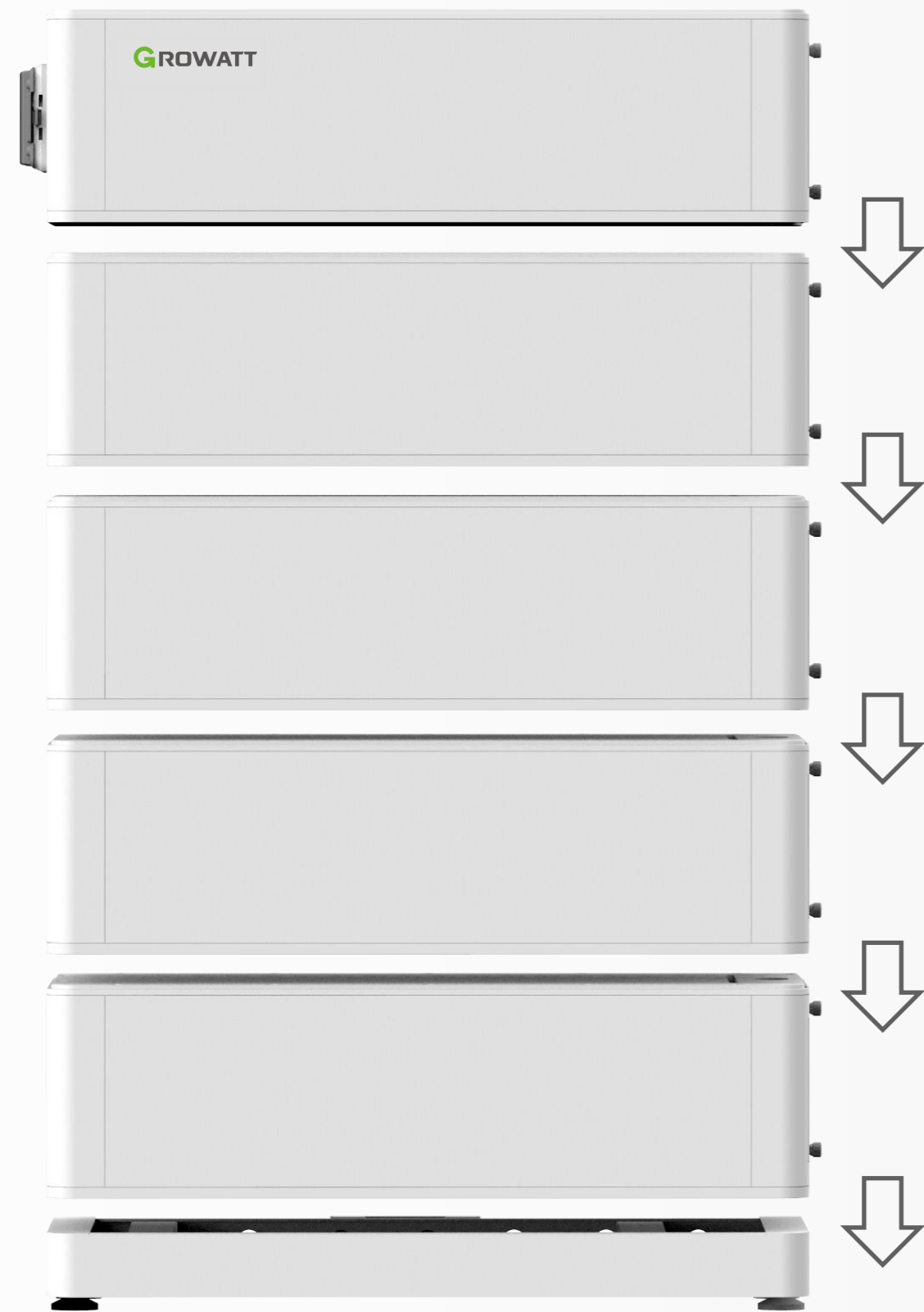


# Advanced Technology

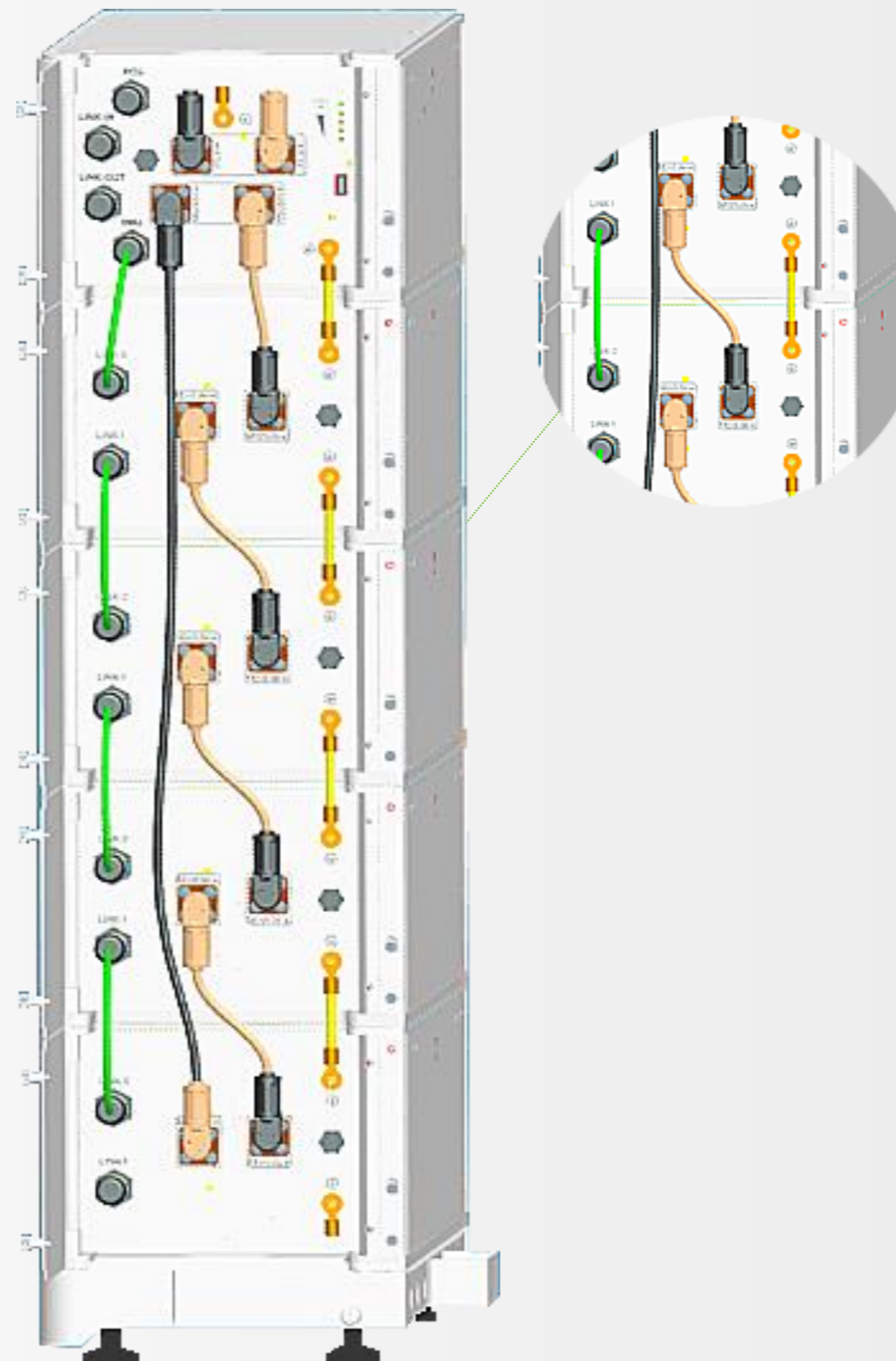


# System Flexibility

## Easy Installation by One Person



Modular Design



Quick Connection

*Stacked Modular Design, Plug and Play*

Module weight is only 28kg

All connection are quick connectors, make installation more easier.

# System Flexibility

## Compatible with Different Storage Inverters

*Hybrid Inverter*



SPH 4000-10000TL3 BH-UP

*AC-Coupled Storage Inverter*

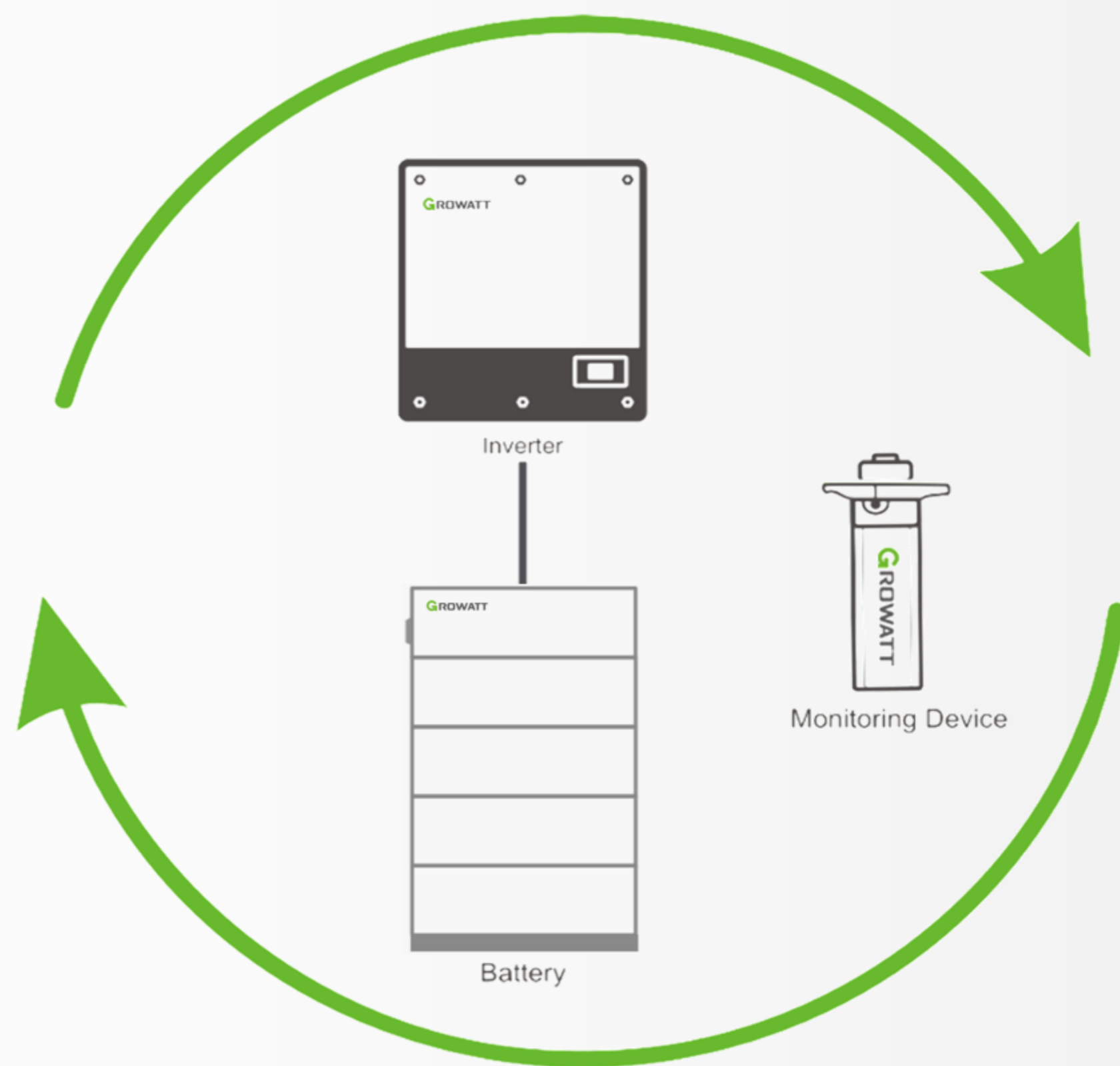


SPA 4000-10000TL3 BH

\* Both storage inverters start with at least 3 pcs ARK-HV battery module

# System Flexibility

## *Whole System Service*



### **Complete Equipment Supply**

Inverter, Battery and Monitoring,  
Compatibility with lithium battery

### **Whole System Guarantee**

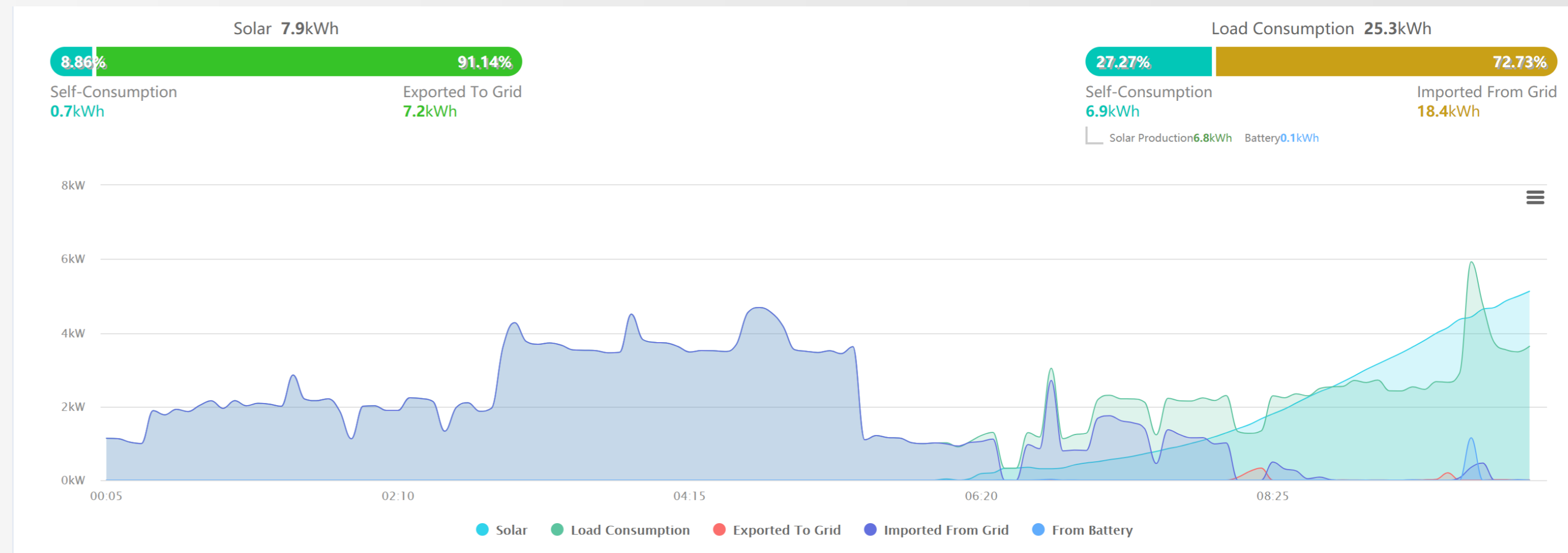
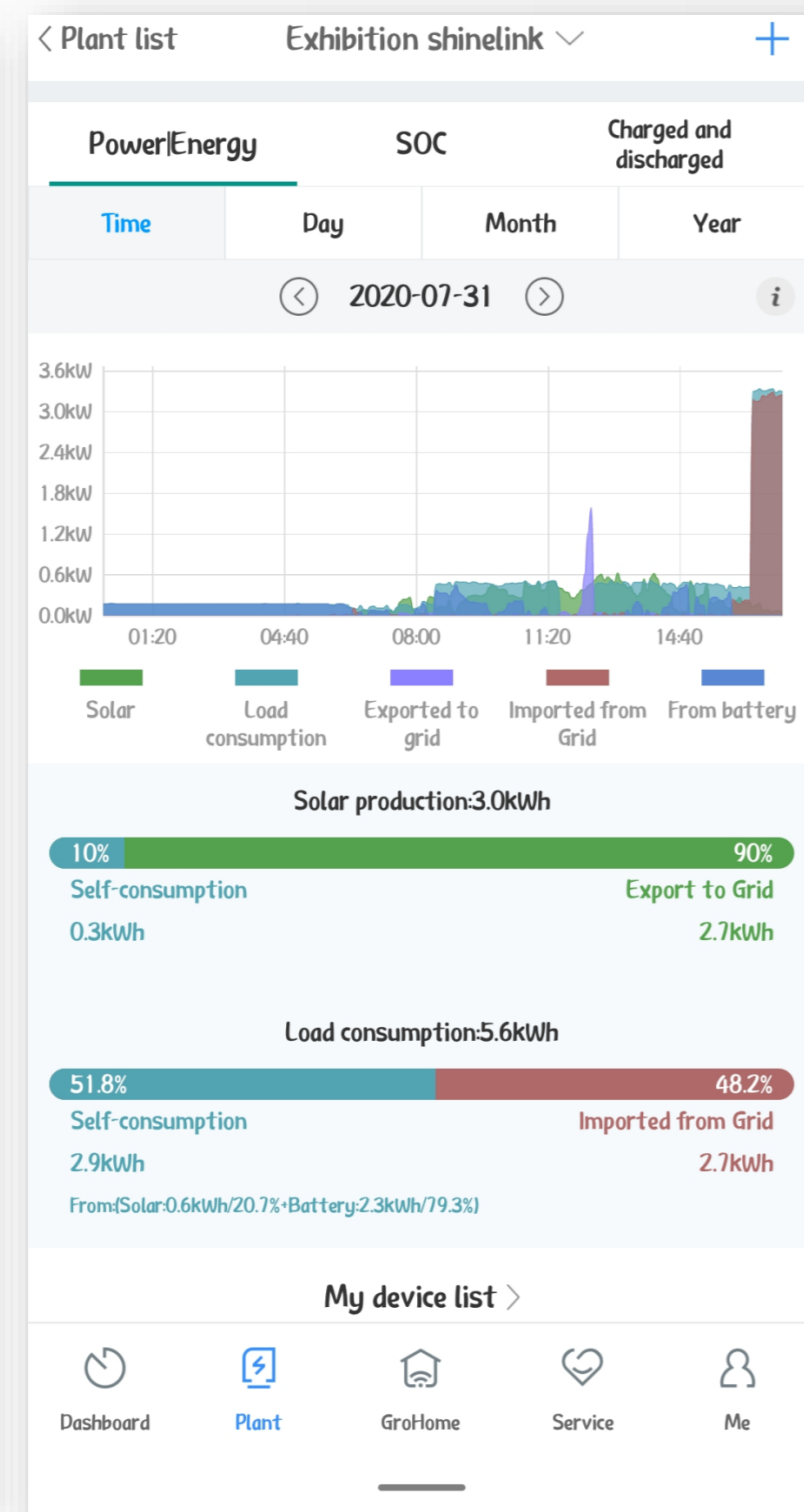
Guidance and help of the whole system,  
Warranty for all devices,  
Professional and local service team

# Smart Management

Real-time data upload status. System states under observation.  
Frequent transfer of lost data after recovery



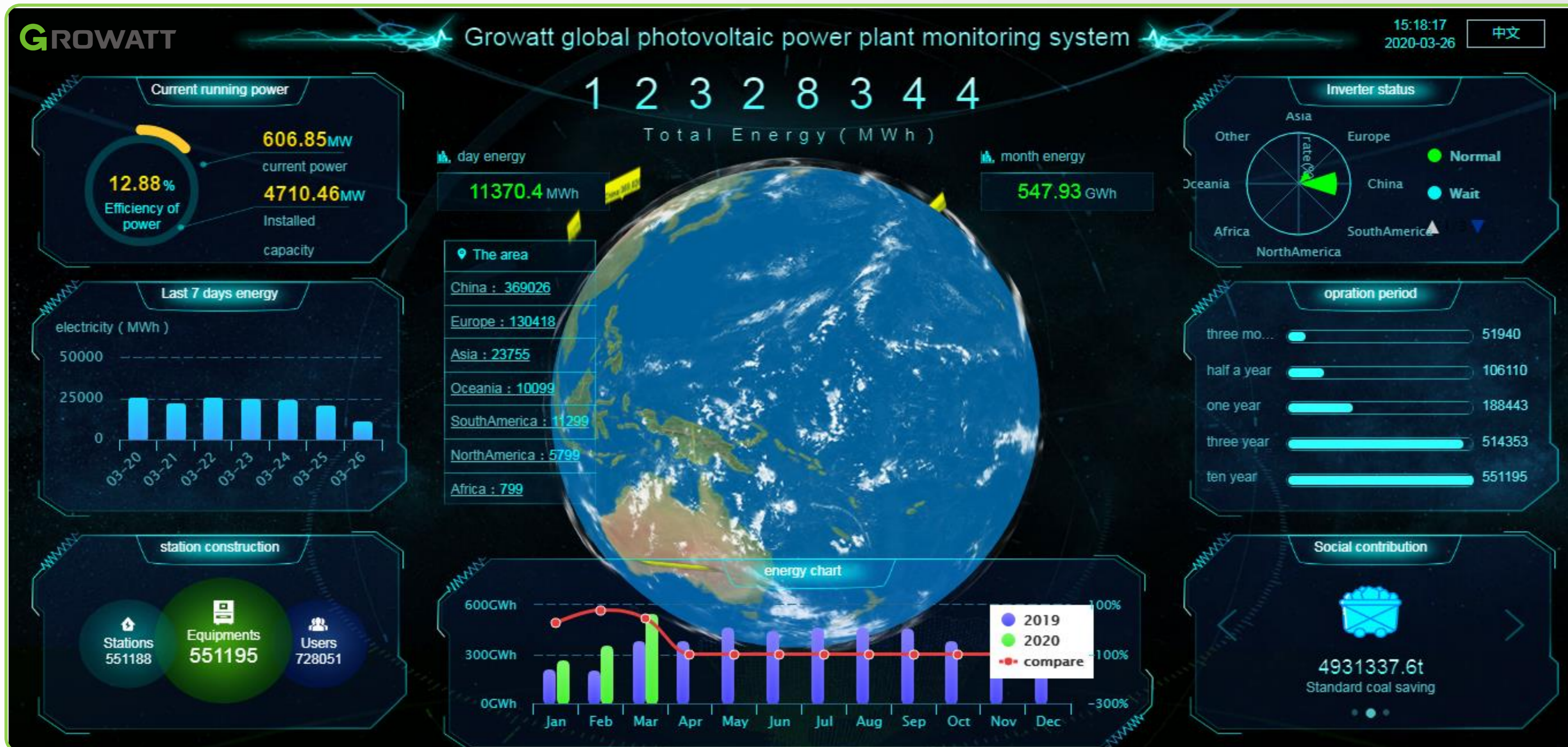
ShinePhone App



Server Monitor

# Smart Management

## Online Smart Service (OSS) System



Online failure reporting

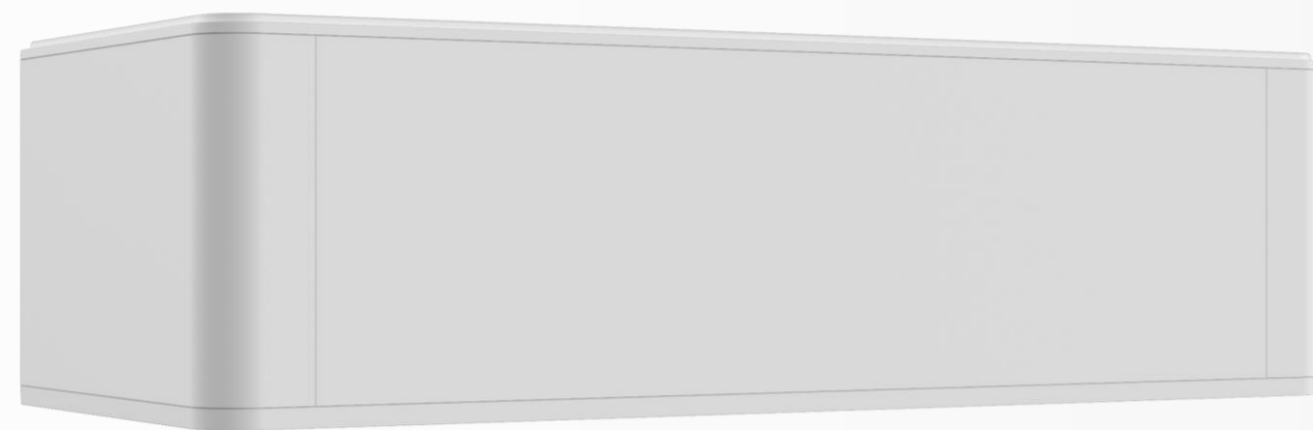
Remote parameter setting

Remote firmware upgrading

No need site travelling

Reduce maintenance cost

# Parameter



Battery System	ARK 2.5H
Total energy	2.56kWh
Usable energy	2.3kWh
Capacity	50Ah
Module Connection	3 ~ 10 in series
Nominal voltage Range	51.2V (48-57.6V)
Charging/discharging current	25A/0.5C (50A Max)
IP degree	IP 65
Operation temperature	-10 ~ 50° C*
Dimension( W*D*H mm)	650*260*185
Weight	28kg
Communication	CAN
BMS Controller	HVC 60050-A1
Warranty	10 Years

- Detailed information please refer to ARK HV Battery system datasheet
- Battery discharge: -10°C ~ 50°C, battery charge: 0°C ~ 50°C



---

# THANKS

---



Copyright© 2021 Growatt New Energy CO., LTD

All Rights Reserved. The information contained in this document is only for reference purpose and subject to change by company officials.

