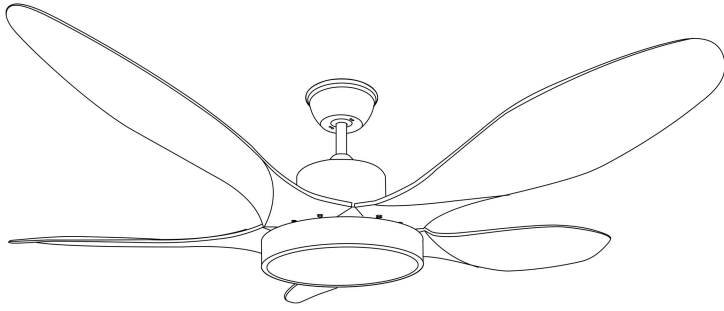


Owners Manual



373349

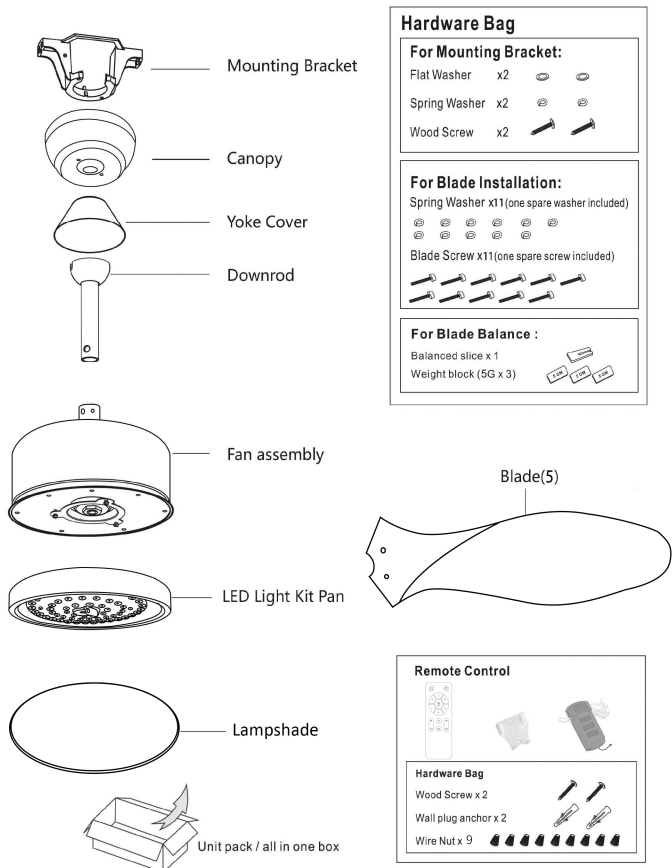
Warning : Read and follow these instructions carefully and be mindful of all warnings shown throughout.

READ AND SAVE THESE INSTRUCTIONS

WARNING : TO REDUCE THE RISK OF FIRE, ELECTRICAL SHOCK, OR INJURY TO PERSONS, PLEASE OBSERVE THE FOLLOWING :

- 1). To ensure the success of the installation, be sure to read the instructions and review the diagrams thoroughly before beginning.
- 2). **To avoid possible electric shock, be sure electricity is turned off at the main power box before wiring.** All electrical connections must be made in accordance with local codes, ordinances and/or the National Electric Code. If you are unfamiliar with the methods of installing electrical wiring and products, require the services of a qualified and licensed electrician as well as someone who can check the strength of the supportive ceiling members and make the proper installations and connections.
- 3). Make sure that your installation site will not allow rotating fan blades to come in contact with any object when fan is in operation. **Blades must mounted at least 2.3 M from the floor.**
- 4). If possible, mount ceiling fan on a ceiling joist - the joist must be able to support the motion and weight of the moving fan. If the fan will be mounted on a ceiling outlet box, a 4" x 2-1/8" deep METAL octagon box is required; one UL listed as "suitable for fan support". The box and its supporting members must not be able to twist or work loose. **DO NOT USE PLASTIC BOXES.** Installation on a concrete ceiling should be performed by qualified personnel.
- 5). Blades should be attached after motor housing is hung and in place. Fan motor housing should be kept in carton until ready to be installed to protect its finish. If you are installing more than one ceiling fan, make sure that you do not mix fan blade sets.
- 6). After making electrical connections, spliced conductors should be turned upward and pushed carefully up into outlet box. The wires should be spread apart with the grounded conductor and the equipment - grounding conductor on one side of the outlet box and the "HOT" wires on the opposite side.
- 7). Electrical diagrams are for reference only. Light kits that are not packed with the fan must be UL/ETL listed and should be installed per the light kit's installation instructions.
- 8). After fan is completely installed, check to make sure that all connections are secured to prevent fan from falling and/or causing damage or injury.
- 9). The fan can be made to work immediately after installation. There is no need to oil your fan. The motor has permanently lubricated bearings.
- 10). The fan must be turned off and stopped before reversing fan direction.
- 11). **The fan is for downrod mount only.**
- 12). **This fan is controlled by remote.**
- 13). **This fan is suitable for indoor use.**

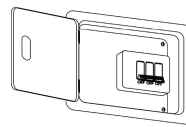
Unpack and inspect fan carefully to be certain all contents are included.



WARNING: blades should be at least 2.3 M from floor

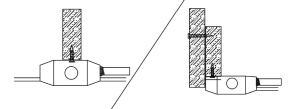
Note 1:

Turn off power at breaker box to avoid possible electrical shock.



Note 2:

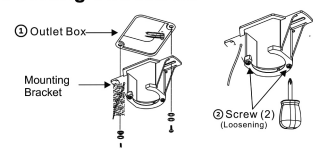
Use metal outlet box suitable for fan support. Outlet box must support 35 lbs min.



1. HANGING SYSTEM INSTALLATION

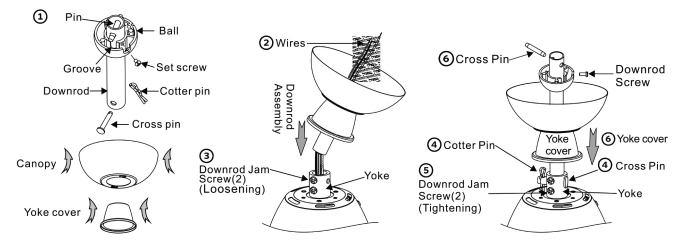
1A. Installing mounting bracket to ceiling outlet box

- ① Install mounting bracket to outlet box in ceiling by using screws included with the outlet box and washers from the hardware bag.
- ② Loosen the screws at Mounting Bracket.



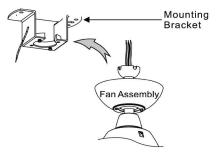
1B. Installing Downrod and Yoke

- ① Need to disassemble ball from downrod by taking off cross pin, cotter pin, set screw & pin first, then insert lead wires through downrod, yoke cover & canopy.
- ② Insert downrod through canopy and yoke cover, and feed motor lead wires through downrod.
- ③ Loosen 2 downrod jam screws at yoke. Insert downrod assembly into yoke.
- ④ Insert the cross pin through yoke & downrod and secure with cotter pin.
- ⑤ Tighten both downrod jam screws to further secure downrod.
- ⑥ Re-assemble ball to downrod (make sure pin is in groove & fasten set screw firmly)
- ⑦ Pull down the yoke cover to cover yoke.

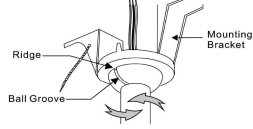


1C. Hanging the fan

Lift fan assembly onto mounting bracket.



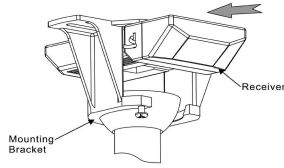
Rotate fan so that the groove on the ball engages the ridge in the mounting bracket.



2. WIRE CONNECTION

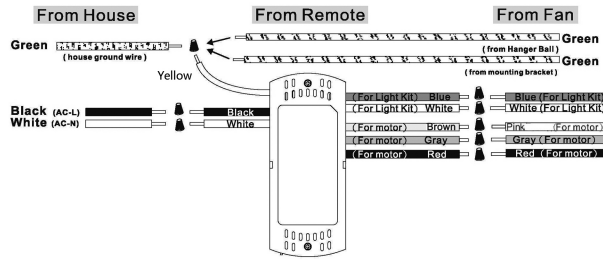
2A. Insert receiver into mounting bracket

NOTE: Do not squeeze all the wires while inserting the receiver into the mounting bracket.



2B. Making electrical wire connection

Follow diagram below and make sure that all exposed wires are secured inside wire nuts. **Note:** Wires from house may vary in color. If the house wires do NOT include a ground wire (green) To prevent flickering, this unit must be grounded/earthed to the home's ground/earth; please consult an electrician. After wiring is completed, gently push wires into junction box with wire nuts pointing upward.

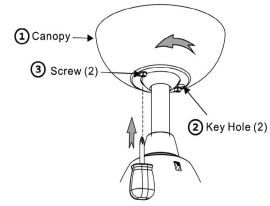


Special note: All Green grounding wires, from Hanger ball/Mounting bracket/Receiver, must be well attached to House Ground/Earth to prevent flickering of LED.

3. CANOPY INSTALLATION

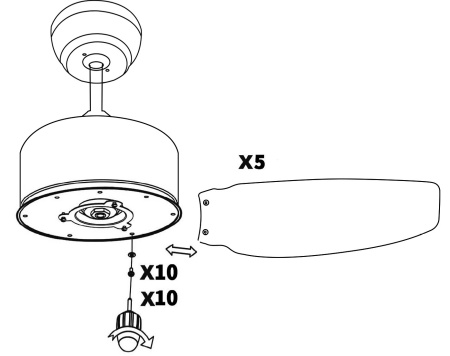
Note: Two screws are pre-installed on mounting bracket for canopy installation.

- Push up canopy until two screws pre-screwed on mounting bracket are engaged with two key holes on canopy.
- Rotate canopy slightly until two pre-installed screw heads are engaged in the narrow end of key holes.
- Tighten both screws.



4. BLADE INSTALLATION

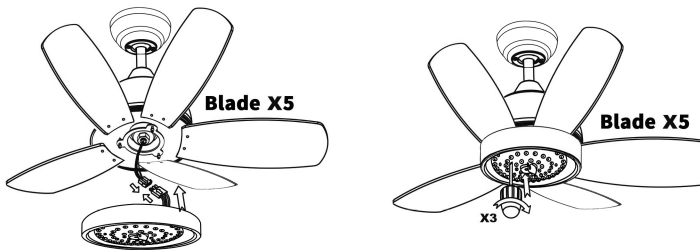
Attach blade to motor with plastic plate & iron plate and screws provided in hardware bag. Make sure that all screws are firmly tightened.



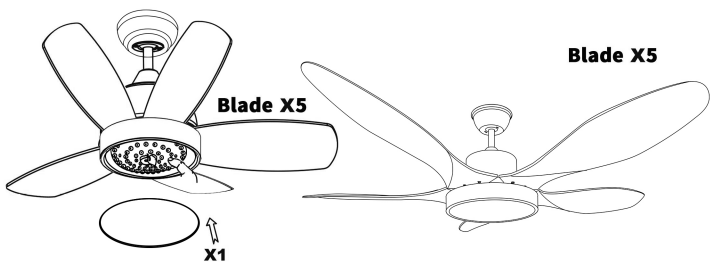
P5

5. LIGHT KIT INSTALLATION

- Connect 2-pin male terminal connector from light kit to 2-pin female terminal connector from fan.
- Rotate Light kit pan slightly until 3 screws heads are engaged in the narrow end of key holes.
- Tighten 3 screws.



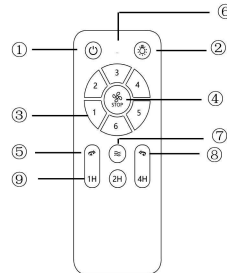
Insert the acrylic lampshade into the light kit Pan.



6. Turn on power at breaker box-Your fan is ready for operation.



OPERATIONAL INSTRUCTION



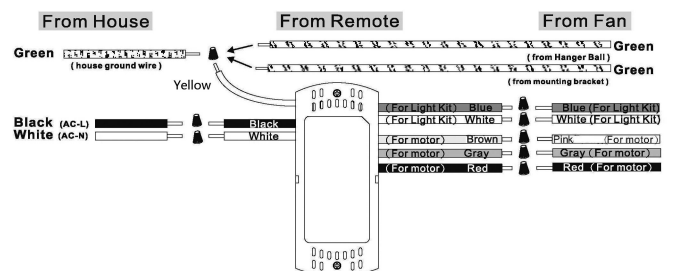
- ALL OFF
- Light ON /OFF
- Speed of the fan (1 low speed----6 high speed)
- FAN STOP
- Forward switch
- LED indicated light
- Natural wind
- Reverse switch
- Timing(1H-2H-4H)
- 3V battery should be used in emitter

KINDLY REMINDERS:

Learning code matching mode is used between emitter and receiver. Turn off the power for 10 seconds, then press and hold the "ALL OFF" and "Light ON/OFF" button of the remote control at the same time with your left hand. Immediately turn on the power with your right hand, hear the two beeps, release your left hand, and successfully learn the code.

TROUBLESHOOTING

- In the event the fan does not operate properly, please perform the following steps.
- Lower the canopy and check that all wires are connected properly.
 - Perform the remote Pairing Process



P6

P7

TROUBLESHOOTING

PROBLEM	SOLUTION
Fan will not start	<ol style="list-style-type: none">1. Check circuit fuses or breakers.2. Check line wire connections to the fan and switch wire connections in the switch housing. CAUTION: Make sure main power is off.
Fan sounds noisy	<ol style="list-style-type: none">1. Make sure all motor housing screws are snug.2. Make sure the screws that attach the fan blade bracket to the motor hub are tight.3. Make sure wire nut connections are not rubbing against each other or the interior wall of the switch housing. CAUTION: Make sure main power is off.4. Allow a 24-hour "breaking-in" period. Most noises associated with a new fan disappear during this time.5. If using an optional light kit, make sure the screws securing the glassware are tight. Check that light bulb is also secure.6. CAUTION: Only Casa Vieja recommended controls are compatible with this fan. Some fan motors are sensitive to signals from solid-state variable speed controls. If you have installed this type of control, choose and install another type of control.7. Make sure the upper canopy is a short distance from the ceiling. It should not touch the ceiling.