



Meaningful Innovation.

WEEE Number: 80133970

## INSTRUCTION MANUAL

### LED FLOOD LIGHT



05 YEAR

WARRANTY\*

IP65 RATING

SAMSUNG LED

illuminated

SUPER BRIGHT  
135+  
LM/WATT EFFICIENCY

PRO SERIES

### TECHNICAL DATA

MODEL	SKU	WATTS	LUMENS	BEAM ANGLE	LIFE SPAN	DF	CRI	INPUT VOLTAGE	OPERATION TEMPERATURE	DIMENSION	N.W (KGS)	MAX MOUNTING HEIGHT	PROJECTED AREA (mm²)	WIRE LENGTH
VT-4455	8844 8845	50W	5740Lm	115°	25000H	>0.9	>70	AC:220-240V,50Hz	-20 to +45°C	183.5x169x34mm	0.56	<5 M	31011.5	150mm
VT-44101	8846 8847	100W	11480Lm	115°	25000H	>0.9	>70	AC:220-240V,50Hz	-20 to +45°C	253.5x242.5x40mm	1.1	<5 M	61473.75	1 M
VT-44201	8848 8849	200W	22960Lm	115°	25000H	>0.9	>70	AC:220-240V,50Hz	-20 to +45°C	402.5x349.5x44mm	2.8	<5 M	140673.75	1 M

\*This product contains a light source of energy efficiency class<D>,where <D> shall be replaced by the energy class of the contained light source.

### INTRODUCTION & WARRANTY

Thank you for selecting and buying V-TAC product. V-TAC will serve you the best. Please read these instructions carefully before starting the installing and keep this manual handy for future reference. If you have any another query, please contact our dealer or local vendor from whom you have purchased the product. They are trained and ready to serve you at the best. The warranty is valid for 5 years from the date of purchase. The warranty does not apply to damage caused by incorrect installation or abnormal wear and tear. The company gives no warranty against damage to any surface due to incorrect removal and installation of the product. The products are suitable for 10-12 Hours Daily operation. Usage of product for 24 Hours a day would void the warranty. This product is warranted for manufacturing defects only.



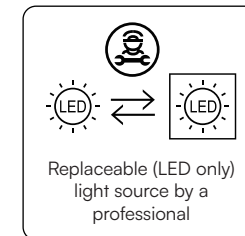
This marking indicates that this product should not be disposed of with other household wastes



Caution, risk of electric shock

### WARNING

- Please make sure to turn off the power before starting the installation.
- Installation must be performed by a qualified electrician.
- The light source contained in this luminaire shall only be replaced by the manufacturer or his service agent or a similar qualified person.
- The external flexible cable or cord of this luminaire cannot be replaced; if the cord is damaged, the luminaire shall be destroyed.
- Replace any cracked protective shield.
- Terminal block not included.
- Proper grounding should be ensured throughout the installation.
- Minimum distance from lighted objects 1m.
- For outdoor use.



**NOTE:** To reduce the risk of strangulation the flexible wiring connected to this luminaire shall be effectively fixed to the wall if the wiring is within arm's reach.



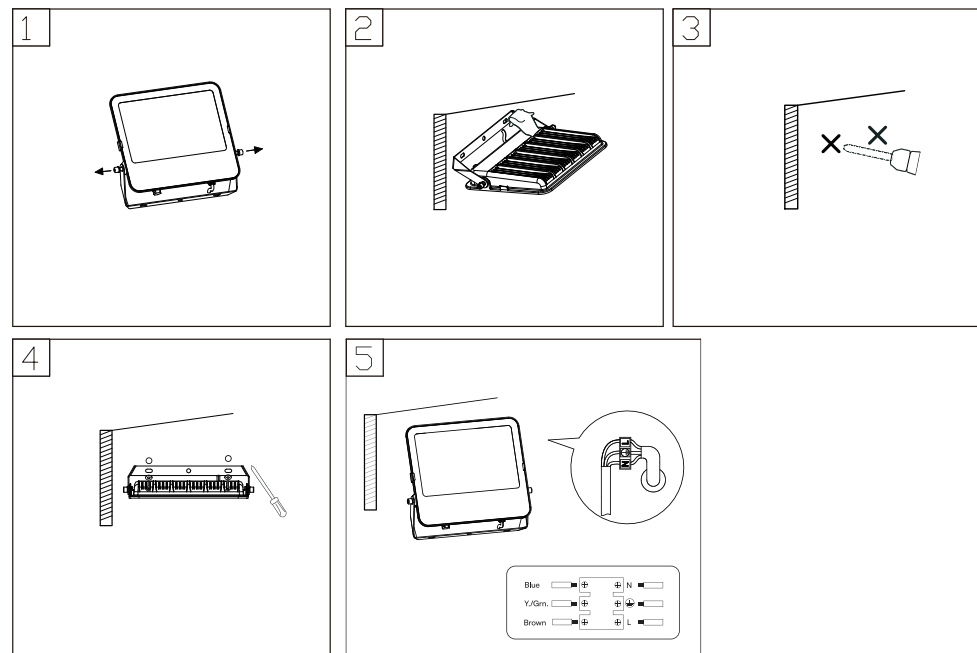
### MULTI-LANGUAGE MANUAL QR CODE

Please scan the QR code to access the manual in multiple languages.



Points de collecte sur [www.quefairedemesdechets.fr](http://www.quefairedemesdechets.fr)  
Privilégiez la réparation ou le don de votre appareil !

### INSTALLATION DIAGRAM



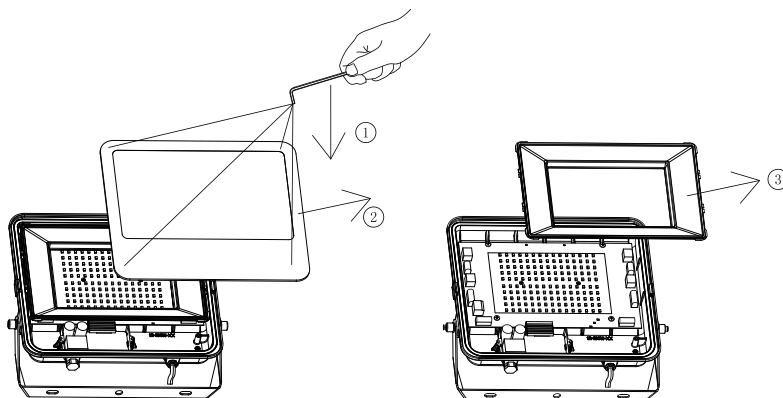
## INSTALLATION INSTRUCTIONS

- DO NOT USE IN AREAS WITH LIMITED VENTILATION OR OUTSIDE THE RATED AMBIENT TEMPERATURE RANGE. \*CON- NECT WITH WATERPROOF CABLE HOUSE ONLY. \*ENSURE ELECTRICITY IS SWITCH OFF BEFORE INSTALLATION.
- Please do not mount to a surface that is prone to vibrations .\*
- Remove the screw and the bracket afterward. (Figure 1)Before drilling, mark the hole position for fixing the bracket onto the wall (Screw not supplied). (Figure 2)
- Screw the retaining bracket to the wall with a suitable quantity of screws. (Figure 4)
- Mount the bracket back to the fixture. Adjust the floodlight according to the desired position. Tighten the screw. (Figure 5) Connect your main cable (HO5RN F3G1.0mm2 Recommended) with the input lead of our product through the waterproof junction box.

**Note:** The line (-) of the lead. (Need to use the junction box of IP65 or above, ensure to tighten the waterproof screw) Switch on the power to make sure if the product is working.

## DISASSEMBLY DIAGRAM

[FOR MARKET SURVEILLANCE TEAM ONLY]



Note: Light source removal will void the warranty



IN CASE OF ANY QUERY/ISSUE WITH THE PRODUCT, PLEASE REACH OUT TO US AT: [SUPPORT@V-TAC.EU](mailto:SUPPORT@V-TAC.EU)  
FOR MORE PRODUCTS RANGE, INQUIRY PLEASE CONTACT OUR DISTRIBUTOR OR NEAREST DEALERS.  
V-TAC EUROPE LTD. BULGARIA, PLOVDIV 4000, BUL.L.KARAVELOW 9B